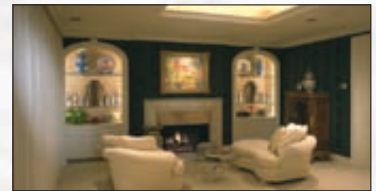
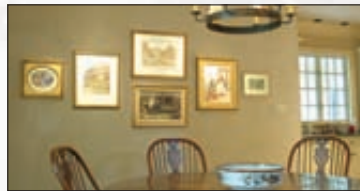
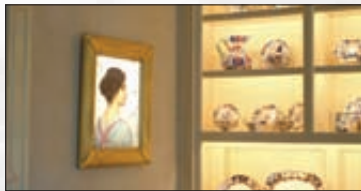
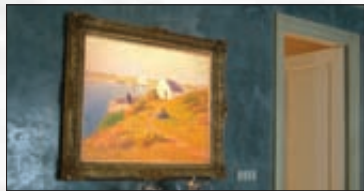


SEE THE LIGHT NOT THE FIXTURE



As innovators in the industry for over 20 years, the creative minds at Phantom Lighting have engineered and patented several unique fixtures over the years that allow designers to bring unequalled beauty to their work with maximum flexibility.

At the core of our product offering is the Contour Projector, a state of the art fixture which continues to evolve and lead the way in fine art lighting.

A second line of products, Phantom low voltage strip lights, allows designers to include seamless linear light in the smallest of spaces, from ceiling coves, to task lighting applications, to individual book shelves for maximum impact. The Phantom strip light can even be used to illuminate adjustable shelves without any visible wiring.

Whether creating the Contour Projector or any one of the Phantom strip lights, the core belief at Phantom is that lighting should bring graceful elegance to a room. We think the focus should be on the room's beauty, not the lights. All of our products are designed with one goal—we want you to:

"See the Light...Not the Fixture."

Phantom's patented Contour Projector goes above and beyond the competition with many features that you can't find anywhere else. Among the achievements:

- A precision optical system with multiple lenses that creates a flexible field of focus, allowing the projector to be placed wherever is most convenient for the designer, including off to the side of the subject.
- An innovative harness mounting system that allows for the market's only recessed remodeler housing.
- Three different framing options for creating perfectly seamless light, along with five different housing options to accommodate any construction condition.

Phantom's Contour Projector is ideal for numerous applications, including:

- Fine Artwork
- Sculpture
- Company Logos
- Multiple objects
- Pianos
- Table Tops
- Architectural Details
- Multiple pieces of art

Your Lighting Needs Are Diverse — So Is the Contour Projector

Contour Projector
FINE ART ILLUMINATION

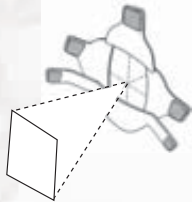


Every project has unique lighting needs and challenges. At Phantom Lighting we know that you need lighting solutions that accommodate your needs...not the other way around.

With that in mind, we've created the industry's most flexible projector system with housing and framing options for every situation, including the trade's first remodeler housing. Our projectors are the most specifier and installer friendly that you'll find...and continue to provide top of the line, patented optics that will amaze even the most discerning clients.

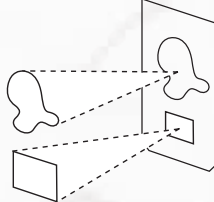
A Masking Method For Every Project

ADJUSTABLE SHUTTERS



Each Phantom Projector comes with 3 different shutter assemblies that are specially designed to compliment a particular beam configuration by adjusting the light to follow the curvature of the lens. This allows for clean, straight lines, regardless of the aiming angle.

METAL SLIDE



A Metal Slide is used on custom cut templates that contour the light to multiple or irregular objects such as sculptures. To illuminate multiple objects on the same wall they must be installed in a collage format.

METAL GOBO



A Metal Gobo is used for projecting black and white images or patterns to create a theatrical effect such as clouds, leaves or structural shapes. Manufactured like a stencil, all elements of the metal gobo design must be connected with tabs to the outer ring of the gobo. Over 700 patterns are available.

GLASS GOBO



A Glass Gobo is used for projecting color images, patterns or logos to create a refined and professional look. Silk Screened Glass Gobos are made on quartz glass using a unique coating silk screened onto the base from digital files. This "painted" coating allows your design to avoid "tabbing" needed in custom steel gobos.

A Housing Option for Every Project



Remodeler Housing

A first in the industry, this innovative remodel housing is specifically designed for installation in existing ceilings without damage to surrounding materials or finishes. The low profile housing is able to fit in between joists as shallow as 10". The round cover plate has a unique glare shield, tapered edge, and matte white finish for a smooth ceiling transition.



New Construction Housing

This heavy duty aluminum housing is designed for installation in new joist space as shallow as 10" deep when access is not available from above. The round cover plate has a unique glare shield, tapered edge and matte white finish for a smooth ceiling transition.



Surface Mount

This heavy duty fixture is used for surface mount and track-mount applications, and is ideal for exposed accent lighting in contemporary settings or where the projector may otherwise be concealed in the architecture. The universal canopy mount is easily adaptable to most standard junction boxes.



Float Finish

This housing lends a highly finished custom look to any space is ideal for those applications that require a smooth ceiling appearance. The float plate has an offset outer flange to allow for easy, seamless installation with conventional taping and floating methods. The result is an inconspicuous cylindrical penetration of the ceiling that is virtually invisible.



Top Access

This housing is used for custom applications when top access is preferred and a cover plate would be inappropriate for the ceiling finish. The result is an inconspicuous cylindrical penetration of the ceiling that is virtually invisible when painted to match the ceiling.

PHANTOMTM
LIGHTING SYSTEM



ETL LISTED, CONFORMS TO UL STD. 1598, CERTIFIED TO CAN/CSA STD C22.2 NO. 250.0
U.S. PATENT #6,832,845

73355

www.phantomlighting.com

800-863-1184