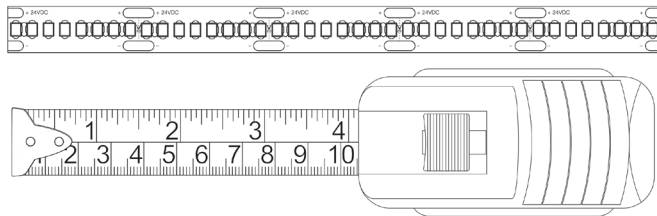


LED Tape Installation Instructions

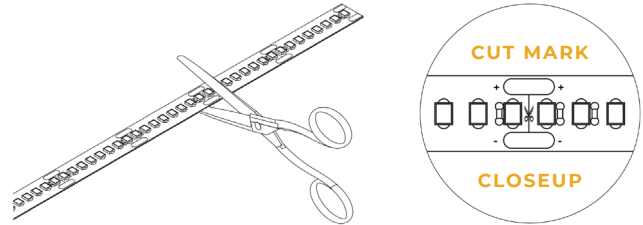
STEP 1

Measure the location where the LED light tape will be installed



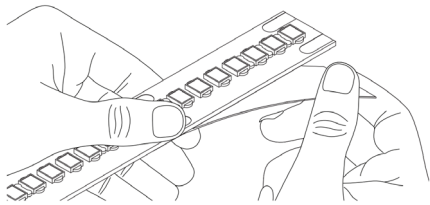
STEP 2

Cut the LED tape light to the desired length, at the designated cut marks (between each female connector) only



STEP 3

Peel back about 1 inch of the red 3M VHB backing to expose the adhesive on the backside of the tape strip



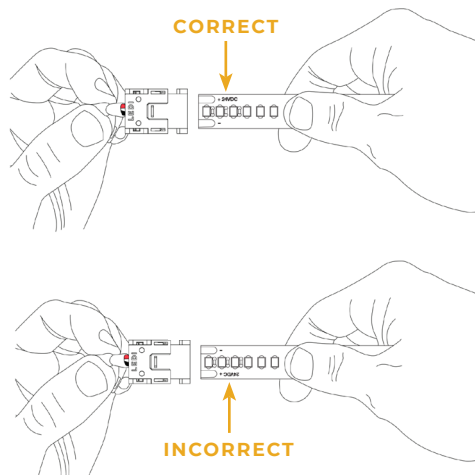
STEP 4

The top cap of the connector is where the low voltage wire is attached. Unlock the connector by sliding the top cap forwards.



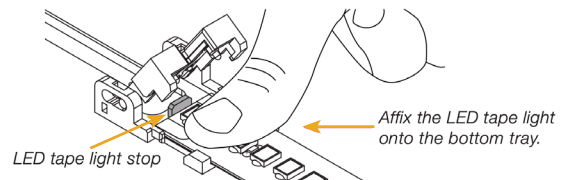
STEP 5

For correct polarity, align the connector with the tape light as shown or the LED tape light will not light when powered.



STEP 6

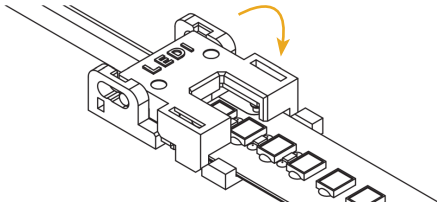
The LED tape light must be aligned with the tray and rest flush against the edge of the LED tape light stop, as pictured below. Once aligned and flush, affix the LED tape light onto the bottom tray of the Zeus HD connector.



INSTRUCTIONS CONTINUED ON PAGE 2

STEP 7

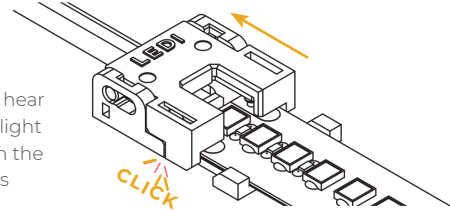
Close the top cap of the Zeus HD connector.



STEP 8

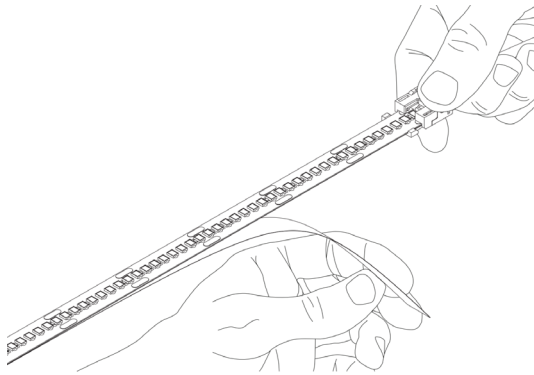
Slide the top cap of the Zeus HD connector backwards, locking the connector and creating a secure connection with the tape.

You should hear and feel a slight "click" when the connector is fully closed.



STEP 9

Peel off the remaining red 3M VHB backing to expose adhesive.



STEP 10

See the LED tape light label for the specific maximum run length of your LED tape light. Stay within the maximum run length – exceeding it can damage the tape light and void the warranty. See terms and conditions below for details.

For run lengths that exceed the maximum run length, separate the LED tape light into multiple runs (with separate power leads) and/or use multiple LED drivers.

STEP 11

Make the connections at the driver and begin enjoying your new lighting product! Refer to the Phantom™ magnetic driver page for additional information.

Terms and Conditions

To comply with Phantom Lighting System warranty policies and ETL Standards, all lighting strips must be used in conjunction with Phantom Lighting drivers. All Phantom lighting transformers are ETL Approved for Class 1 applications and are strongly recommended for proper operation of lighting strips. Phantom drivers should not be located in areas with no ventilation or subject to high ambient temperatures. If ambient temperatures exceed 115°F (46°C) around the driver, the circuit breakers may nuisance trip due to excessive heat.

CAUTION: FAILURE TO CORRECTLY SIZE PRIMARY AND SECONDARY CONDUCTORS AND/OR OVERLOAD PROTECTION MAY RESULT IN BODILY INJURY OR SERIOUS PROPERTY DAMAGE.

Likewise, Phantom lighting strips should be installed in such a way as to properly dissipate heat. We recommend that you allow a minimum overall 3" set back from the wall or ceiling plane being illuminated. Not only does this clearance allow the heat to escape, but it allows room for installation, servicing, and changing lamps. If you are using exotic wood, veneers, or heat-sensitive fabrics, we suggest increasing this clearance from a 3" to a 5" set back.

If you have any questions or concerns regarding your application, please contact the Phantom Lighting factory, a licensed electrician in your area, or consult the National Electric Code.